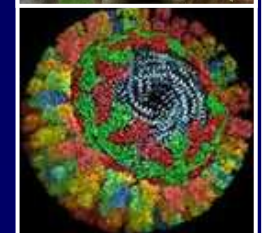
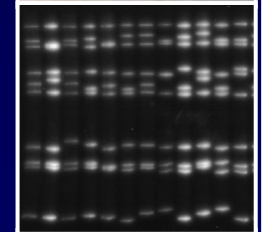
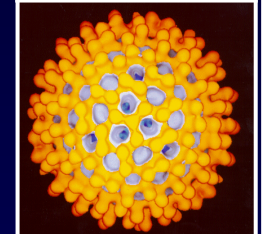
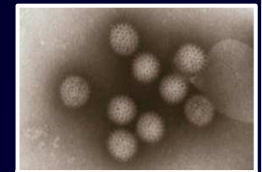


# Bilan sur la situation épidémiologique de la FCO en France

Stéphan ZIENTARA  
UMR Afssa/INRA/ENVA  
Maisons-Alfort, France



AFSSA, 18 mars 2010

**La FCO en Europe de 1979 à 1998...**





**FCO en France de 2000 à 2004**

**2000 : BTV2  
2003 : BTV4  
2004 : BTV16**

Réactions sérologiques

# 2006



Année étonnante !!

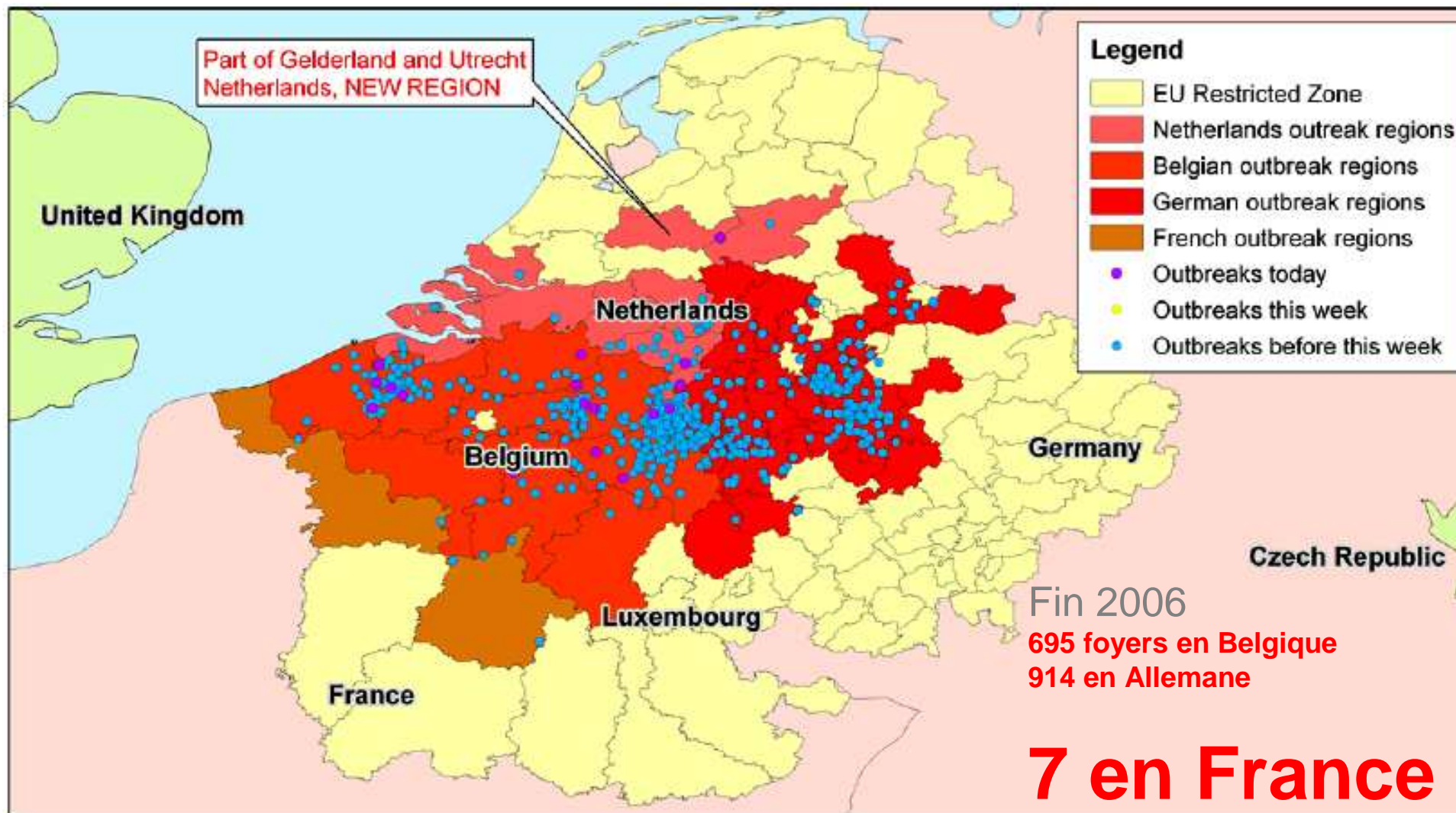
**Situation dans le bassin méditerranéen (1998-2006)**



9

2, 4, 9, 16, 1

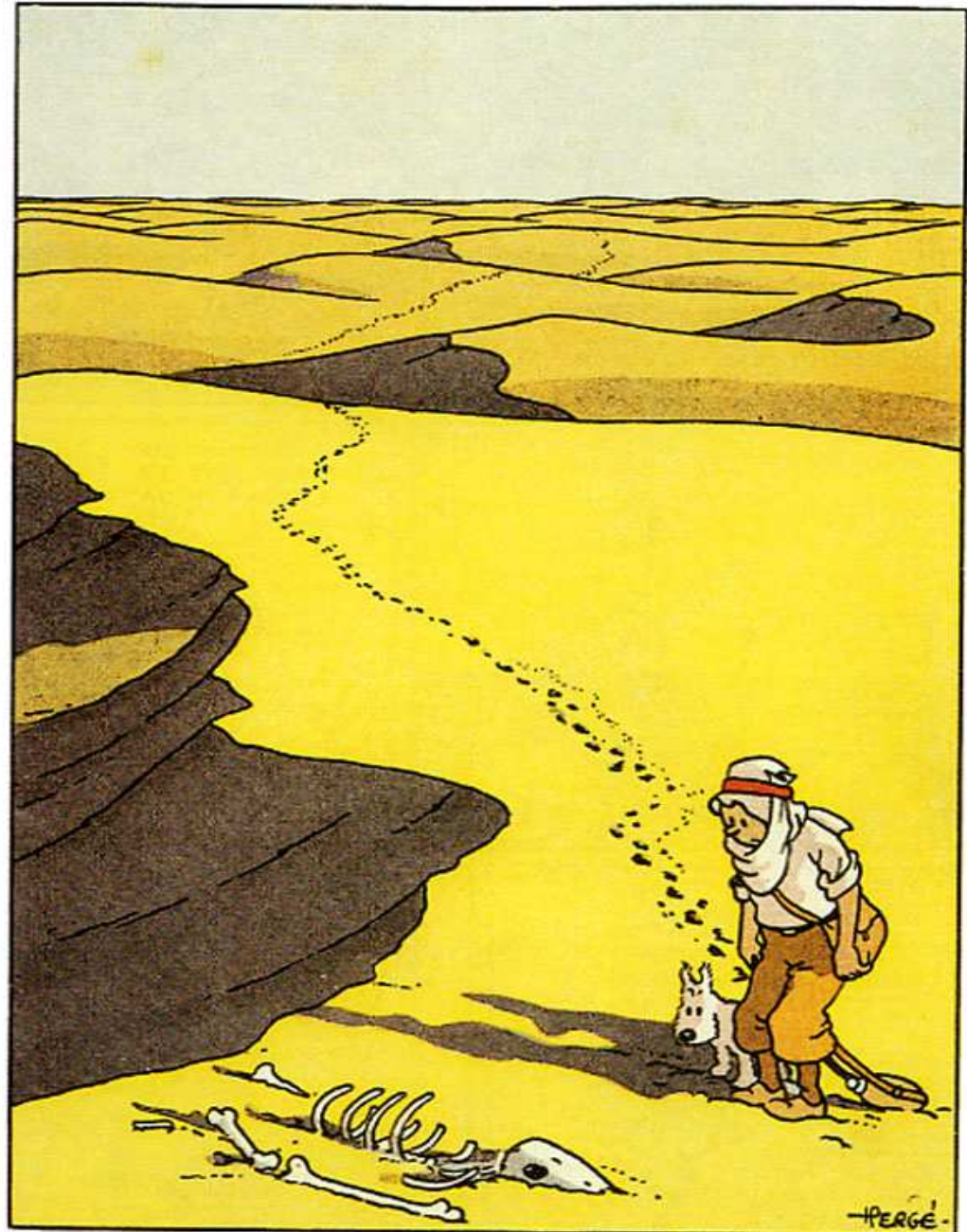
4



# 1<sup>er</sup> cas français !!



« Overwintering ? »

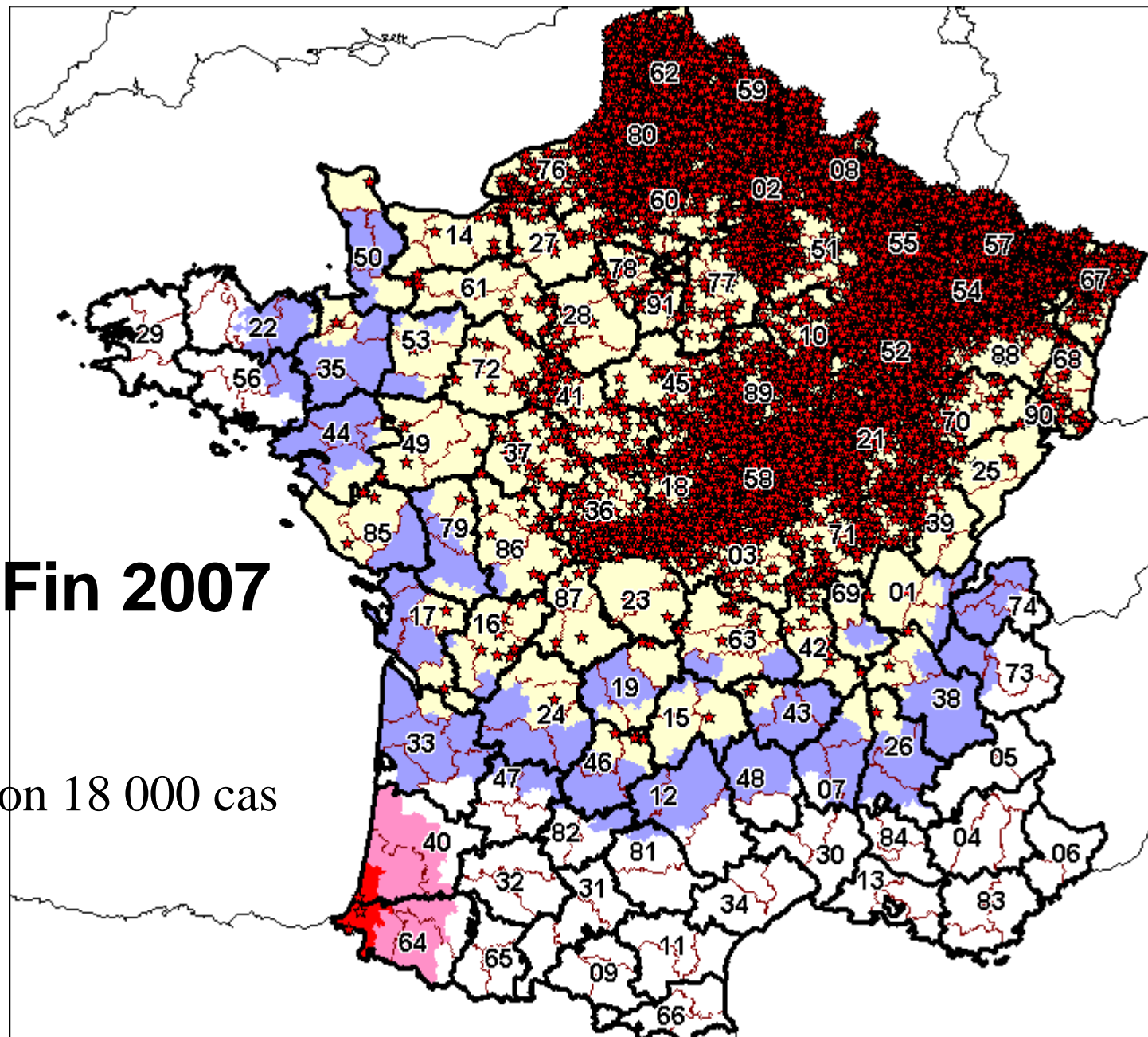




# 2007



L'invasion !!

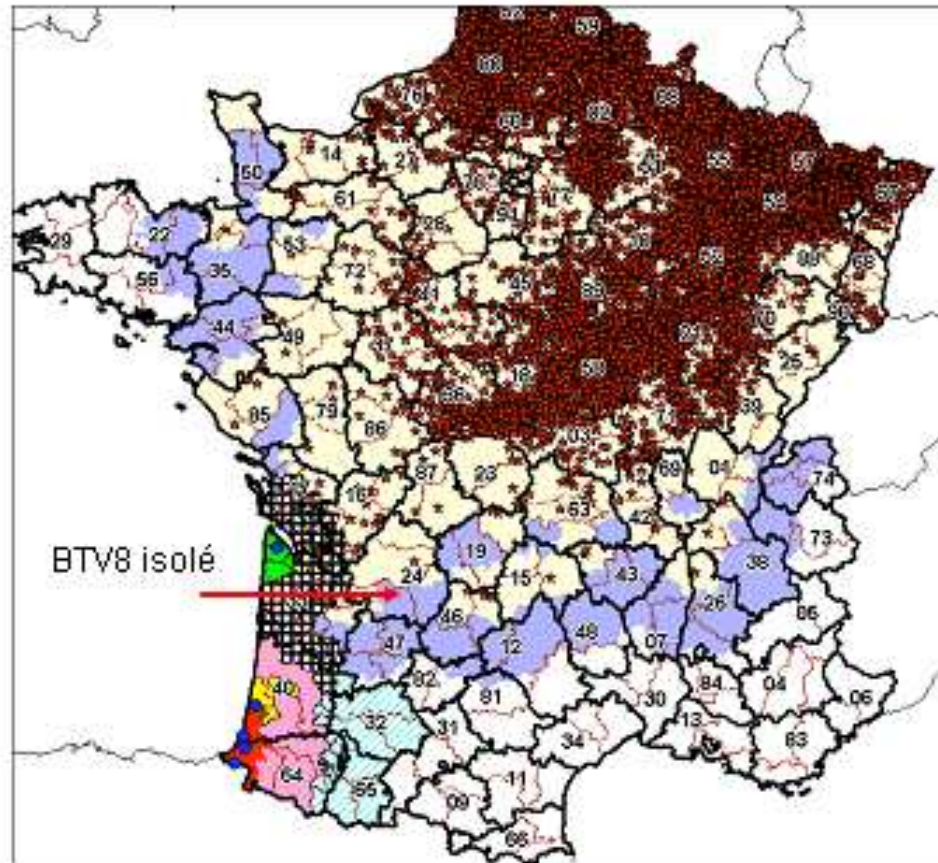


# 2008



La dépression !!!

# Situation en France en 2008

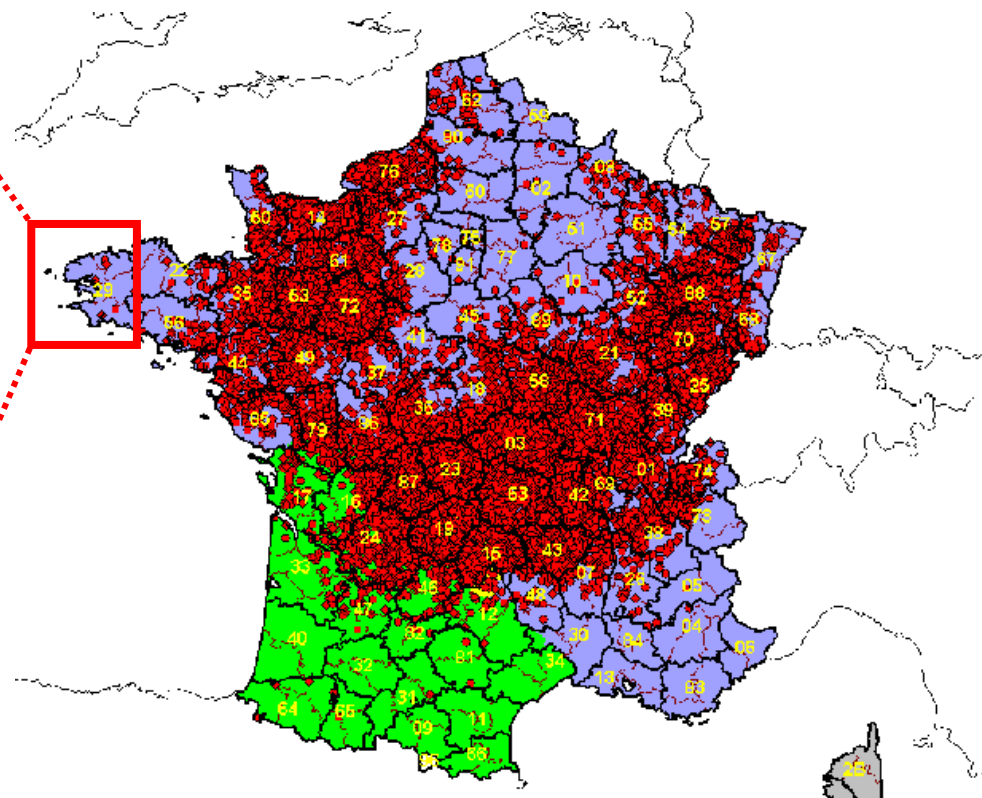


March 30, 2008 3866 cases in 2008 (2 with serotype 1)

Octobre 2008



**1 bovin BTM1 positif**  
**63 animaux (1+/63)**

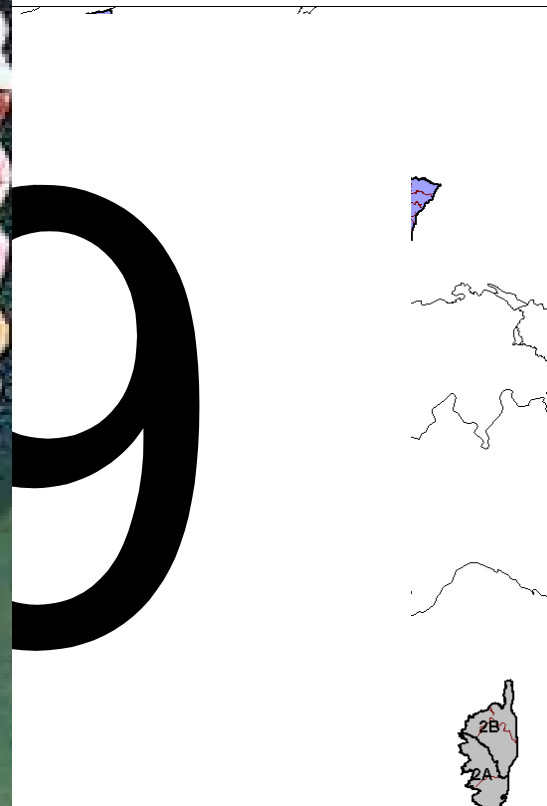


**3 Animaux (2 signes cliniques) +**

# Nombre et localisation des cas de FCO en France en 2008

BTV-8

BTV-1



31 décembre 2008

